

A hand holding a pen over a test form. The background is a warm, golden-brown color with a blurred image of a hand holding a pen over a test form. The text is centered and enclosed in a black rectangular border.

# **Understanding Standardized Testing In 2023**

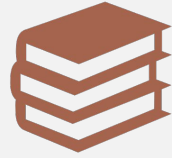
# Testing Calendar at Waubonsie Valley

	Fall Term	Spring Term
<b>Freshman</b>		<b>PSAT 8/9, AP</b>
<b>Sophomore</b>		<b>PSAT 10, AP</b>
<b>Junior</b>	PSAT/NMSQT	<b>ISA, SAT, AP, ACT</b>
<b>Senior</b>	Retake SAT / ACT	AP

# Illinois Science Assessment



# Illinois Science Assessment



State required exam, currently mandated for juniors



State accountability, not college reportable



Three self paced sections, last approximately 1 hour each

# AP- Advanced Placement Exams



# AP Exams

- Given in May of each year at the end of an academic year of study
- Composed of a multiple choice and writing/essay section. Some AP Exams will have a spoken/recording portion
- 2-3.5 hours in duration
- Scored on a 1-5 Scale
- Potential to earn college credit or place out of entry level courses





# Testing for College Admissions

-Or Not-

# Test Optional College Admissions

- Many colleges removed SAT/ACT as an admissions requirement
  - Pandemic, Equity, Appropriateness
- Some schools are reversing this decision
- Other language you can see:
  - Test Blind, Test Required



ACT

# ACT



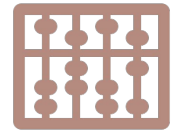
**College Admissions  
Test**



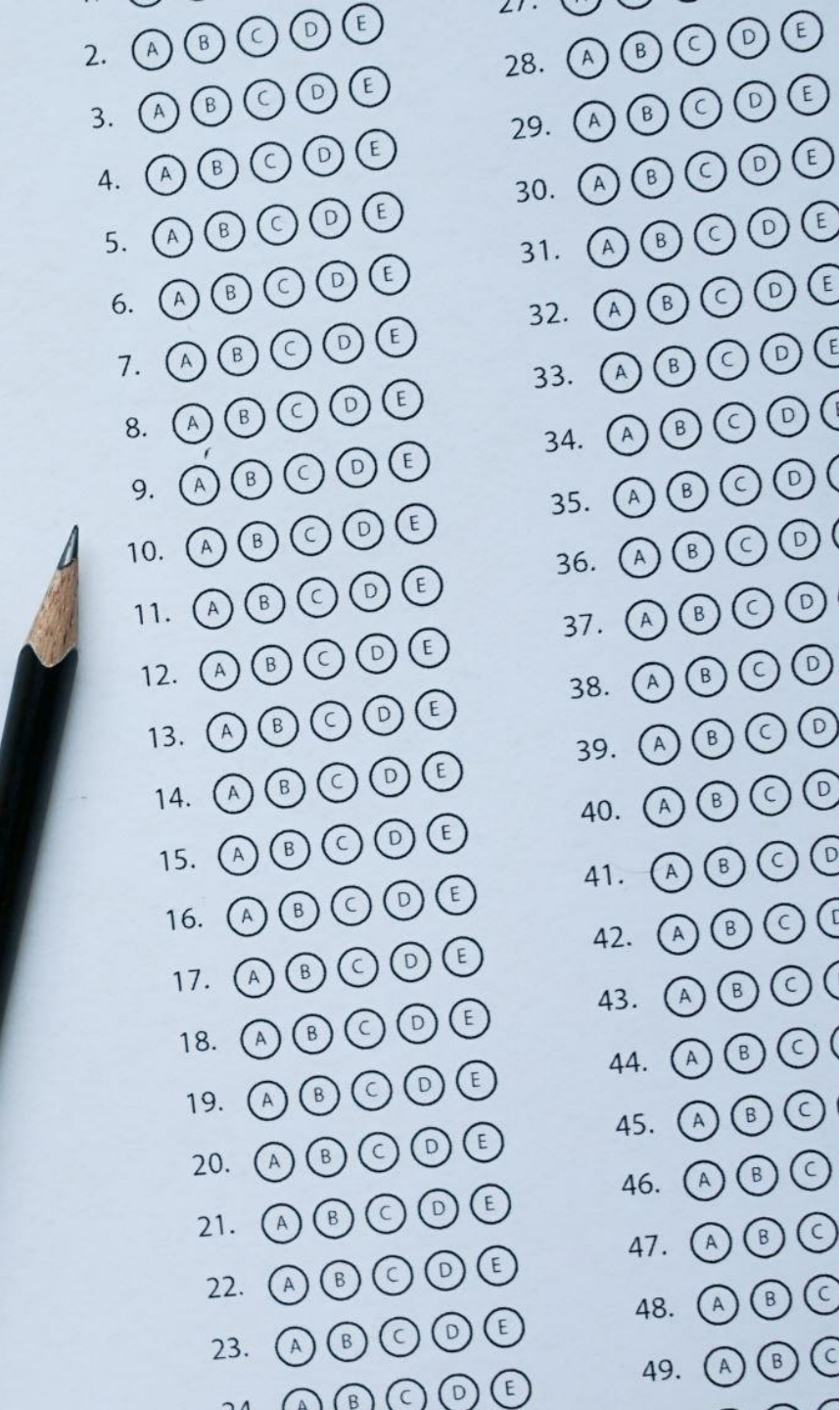
**Traditionally used by  
Midwestern schools**



**Score Range of 1-36**



**No Penalty for wrong  
answers**



# ACT

## Four Sections:

English	45 Minutes	75 Questions
Math	60 Minutes	60 Questions
Reading	35 Minutes	40 Questions
Science	35 Minutes	40 Questions
(Essay)	40 Minutes	1 Written Response

Important to be aware of pacing

# College Board & The SAT Suite

PSAT 8/9, PSAT 10, PSAT/NMSQT, SAT

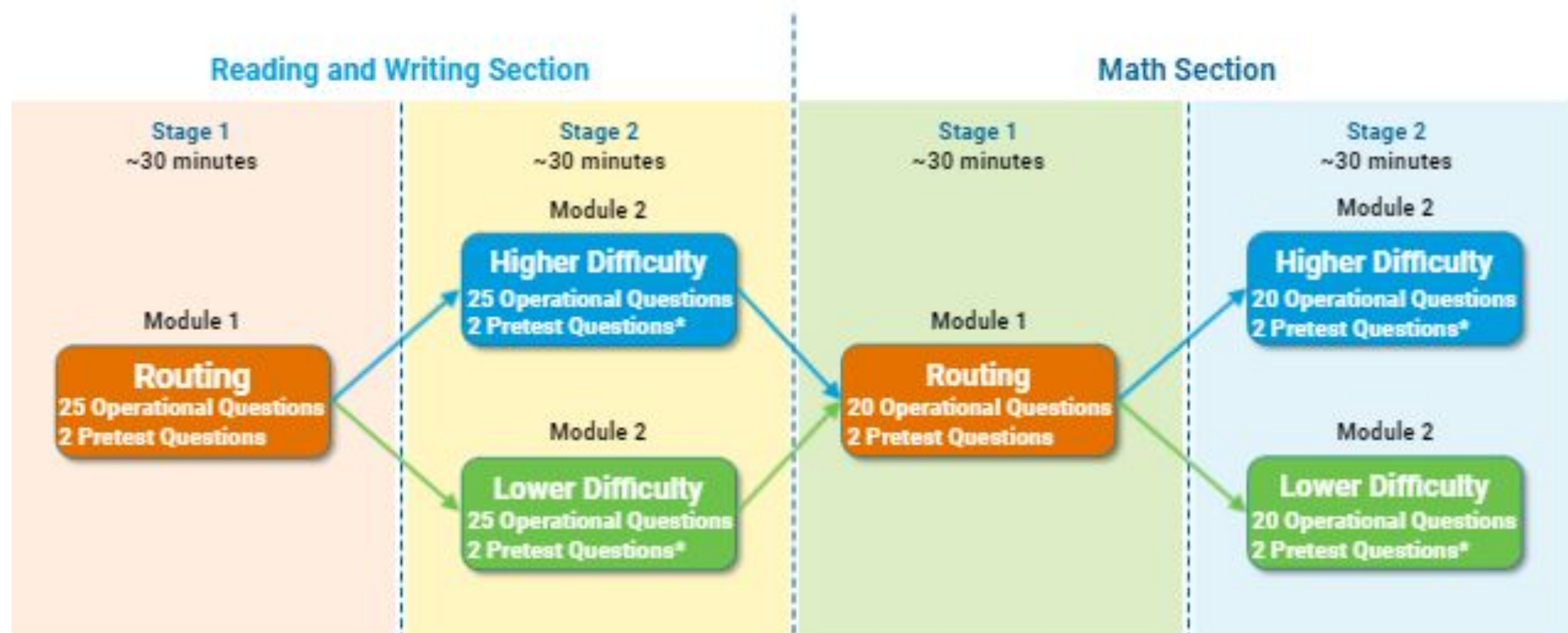
# Format Changes for the SAT

# Format Changes for the SAT

- December testing date is the LAST paper test opportunity
- Adaptive testing model that adjusts to the student
- Assessment taken on student Chromebook
- Timed breaks are built in
- “Scores are reported faster” - SAT

# Digital SAT Suite

**Test Design** A multistage adaptive test design with embedded pretesting.



\* Stage 2 pretest questions unique, same pretest questions in higher and lower-difficulty modules

## Key Benefits

- ✓ Test adaptivity
- ✓ High measurement precision
- ✓ High test reliability
- ✓ Greater variety in test content
- ✓ Greater test-taking flexibility

# Format Changes for the SAT

- Content is the same, structure is different
- Test time is significantly shorter**
- Reading/Writing = 64 Minutes
  - Shorter passages with 1-2 questions per passage
  - Wider range of topics that represent works in college
- Math = 70 minutes
  - Calculator tool included (modeled after Desmos) for all of the test
  - Students can still bring their own approved calculator



# Bluebook Testing Interface

The screenshot displays the Bluebook testing interface. At the top, the window title is "Bluebook". Below it, the section is identified as "Section 1, Module 1: Reading and Writing". A timer shows 26:50. A "Directions" dropdown menu is set to "3". A "Hide" button is visible. In the top right corner, there are icons for "Annotate" (5) and "More" (4), with a 99% battery indicator. The main content area is divided into two columns. The left column contains a reading passage. The right column contains a question and four answer choices. A "Mark for Review" button (6) is located above the question. A vertical line (8) separates the text from the question. A "Mark for Review" button (7) is also present in the top right of the question area. At the bottom, the user's name "Maddison Styles" is shown on the left, "Question 6 of 27" with an upward arrow (9) in the center, and "Back" and "Next" buttons on the right.

Bluebook

Section 1, Module 1: Reading and Writing

Directions 3

26:50

Hide

Annotate 5

More 4

99% BIP

The following text is from Jane Austen's 1811 novel *Sense and Sensibility*. Elinor lives with her younger sisters and her mother, Mrs. Dashwood.

Elinor, this eldest daughter, whose advice was so effectual, possessed a strength of understanding, and coolness of judgment, which qualified her, though only nineteen, to be the counsellor of her mother, and enabled her frequently to counteract, to the advantage of them all, that eagerness of mind in Mrs. Dashwood which must generally have led to imprudence. She had an excellent heart;—her disposition was affectionate, and her feelings were strong; but she knew how to govern them: it was a knowledge which her mother had yet to learn; and which one of her sisters had resolved never to be taught.

6 Mark for Review

According to the text, what is true about Elinor?

(A) Elinor often argues with her mother but fails to change her mind.

(B) Elinor can be overly sensitive with regard to family matters.

(C) Elinor thinks her mother is a bad role model.

(D) Elinor is remarkably mature for her age.

Maddison Styles

Question 6 of 27 ^

Back Next

# Bluebook Testing Interface

Bluebook

Section 2, Module 1: Math

Directions ▾

1:01:59

Hide

1 Calculator

2 Reference More

### Student-produced response directions

- If you find **more than one correct answer**, enter only one answer.
- You can enter up to 5 characters for a **positive** answer and up to 6 characters (including the negative sign) for a **negative** answer.
- If your answer is a **fraction** that doesn't fit in the provided space, enter the decimal equivalent.
- If your answer is a **decimal** that doesn't fit in the provided space, enter it by truncating or rounding at the fourth digit.
- If your answer is a **mixed number** (such as  $3\frac{1}{2}$ ), enter it as an improper fraction ( $\frac{7}{2}$ ) or its decimal equivalent (3.5).
- Don't enter **symbols** such as a percent sign, comma, or dollar sign.

Examples

Answer	Acceptable ways to enter answer	Unacceptable: will NOT receive credit
3.5	3.5 3.50 7/2	3 1/2 3 1/2
$\frac{2}{3}$	2/3 .6666 .6667 0.666 0.667	0.66 .66 0.67 .67

6 Mark for Review

The table summarizes the distribution of color and shape for 100 tiles of equal area.

	Red	Blue	Yellow	Total
Square	10	20	25	55
Pentagon	20	10	15	45
Total	30	30	40	100

If one of these tiles is selected at random, what is the probability of selecting a red tile? (Express your answer as a decimal or fraction, not as a percent.)

**Answer Preview:**

# Preparing for the SAT

# Preparing for the SAT

- Khan Academy
- Aurora & Naperville Public Libraries
- Waubonsie Valley College Test Prep Course
- Private Test Prep Companies
  - C2 Education | Huntington | Kaplan | Princeton Review | Revolution Prep | & Many More

# Khan Academy & College Board

- Official SAT prep program partner of College Board
- Free online program customized to your student
- Import test results or take a practice test to identify strengths and weaknesses
- Customized learning schedule based on your target test date.



# Preparing for the SAT

Take care of your body A FEW DAYS BEFORE the test, so your mind can perform!

Get good sleep

Get movement in your day

Eat well

Drink water

# High School & Beyond

Please provide feedback  
on the sessions you  
attended this evening

(can be completed after each session or  
once at the end of the evening)



# Thank you!



Any questions?

**Matt Walker**  
Warrior House  
Sen-Tn  
[matthew\\_walker@ipsd.org](mailto:matthew_walker@ipsd.org)